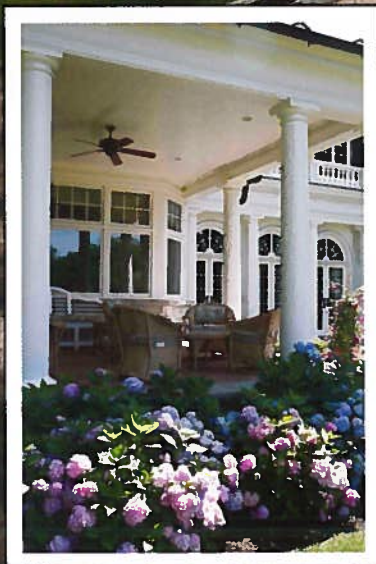


KEAN



New York & Palm Beach
631-367-9696
www.keandevlopment.com



NOVEMBER/DECEMBER 2012 \$4.00

HOUSE

DESIGN • ARCHITECTURE • LIFESTYLE

Kean's
majestic style



The brilliance of
the Kitchen Lady



Builders start
the rebound



A barrel vaulted portico, fabulous turret and charming custom stone chimneys detail the inviting front façade.



The patina of history Kean Development's mastery of simplistic elegance

BY NANCY PATTERSON

Photography by Sargent Architectural Photography

Soft pink crape myrtle trees line the side lawn above the pool at the back of the house. Strong windows, columns and railings open up the rear façade to boundless water views.



Spacious reception foyer features an integrated staircase, built-in bench and panelized newel post, a French influence carved marble fireplace surround and Parquet de Versailles-style floor.

The challenge of a new house is to give it the warmth and patina of a residence with history. Kean Development Company has mastered that element of design and construction. Distinctive homes echo the elegance and sophistication of a grand manor, yet impart an intimacy born of the owners and their unique style. Kean Development Company's signature is one of luxury, quality and timeless beauty.

Gracefully poised high on a ridge overlooking the busy harbor, this magical aerie boasts secluded direct waterfront. A coveted and serene coastline, this "Gold Coast" seascape is breathtaking, one of the most picturesque on Long Island. Distant views of Connecticut and Long Island Sound provide the canvas on which the masts and hulls of this delightful harbor come to life.

Recently completed, this Shingle Style retreat evokes the sense of a vintage, late 19th century manor house with a playful massing of gabled ends and a delightful turret, fully clad in cedar shakes and anchored with stonework in the "Richardson-Romanesque style. Designed by



Circular stair tower with spectacular stacked leaded glass windows. Superb mahogany bannister and custom spindles run the length of the second story exposure.



Westchester stone articulates warm antique fir paneling. A handsome bay window captures water views over the expansive rear deck.

Filled with actual Plaza Hotel items collected by the homeowner, fine custom oak paneling and a hand painted "Plaza" view mural detail this lower level.



Anchored by an antique fir island with Verdi marble top, hand painted ceramic tile backsplash, CornuFe stove, custom designed and built Kean cabinets. "Brandy" awaits a puppy treat.

Kean, Willams, Giambertone Ltd, the animated slate roofline is trimmed in crisp white cornice work and copper. Abundant, historically correct fenestration showcases stunning water views. Beautifully appointed, with a mélange of architectural nuance,

broad hallways with superlative harbor views in mind, comprised of elevations that artistically capture them. Custom stone, exotic woods and imported tile are pervasive.

The seamless marriage of simplistic elegance and state-of-the-art technology is what sets Kean apart.

The open, gourmet kitchen with buttery yellow custom cabinetry, tile backsplash and Verdi marble-topped center island allows the chef, top of the line appliances, including a fabulous CornuFe stove and generous entertaining capacity. The adjoining breakfast area overlooks the terrace, rear grounds and water. The sun-bathed, octagonal conservatory features mullioned transoms topping paneled windows that celebrate the sea and sky. Beams articulate the peaked ceiling with soft lighting and pale blue grass paper. Imported, hand painted ceramic tables in Tuscan blues and yellows, glass doors and a herring bone brick floor color this charming haven... an idyllic alfresco dining venue. Off the kitchen complex: butler's pantry, powder room, elevator and office, the family room paneled in rich antique fir, features a

big wet bar and paired, arched bookcases with Westchester Fieldstone framing a matching fieldstone fireplace. Water views enhance the lovely living room as well. Drama describes the dining room, where rich cranberry infused glass and brocade mingle.

The lower level houses the full oak bar, lounge and billiards entertainment area. Accouterments from the Plaza Hotel's famed Oak Room detail the "Plaza Room," paneled in antique quarter sawn white oak with game chairs, sconces, door-knobs and ashtrays from the famous watering hole meticulously collected by the homeowner. A mural depicting the hotel plays center stage to handsome, recessed oak bookshelves, beams and substantial glass doors with decorative transoms overlooking the pool and harbor. The village's seventh phone hangs at the bar.

Beyond the Plaza room lies a Bahamian paradise, where the color palette is one of azure, emerald and indigo. The indoor pool, spa and cabana kitchen are housed within this two-story paneled core painted a pristine white and detailed with myriad tall windows, columns and doors out to

arresting color and antique treasures, the expansive interior conveys a warm, intimate aura.

The reception foyer is magnificent, tailored in superb custom millwork, with a carved marble fireplace, parquet de Versailles floor in distressed antique oak and exquisite staircase with exposed, two-story balustrade. The turret features stacked hand leaded, curved windows and a bell-topped crown. Public rooms are accessed from



Custom oak paneled bar replicates the famous Plaza Hotel's Oak Room with marble bar tops, leaded paneled cabinets, custom stain glass and Seura mirror television.



The family's "favorite" room boasts a sentimental hand painted mural on canvas, roll out pool cover to control temperature and humidity and salt water generator. A full, custom mosaic tile, spa kitchen with fireplace and bar graciously services the pool area.



A hand cut brick floor mirrors the vaulted, beamed octagonal ceiling with charming bamboo lantern and grass cloth. Numerous windows and doors with paned transoms overlook the picturesque harbor below.

the outdoor pool, terrace, grounds and harbor. It is a magical oasis with full entertaining kitchen, bar and fireplace.

The second floor offers exquisite bedrooms suites complimented with rich millwork, en suite marble baths and private, water view balconies.

The master suite is a fab-

ulous, private refuge, topped with a coffered tray ceiling, lovely windows and French doors out to the balcony overlooking the harbor. Decorative, recessed niches house armoires, flanking a delicate, marble fireplace. Stunning pale silks and damask complete the bedroom. Full floor to ceiling marble embellishes the

master bath.

The 4.5-acre setting of rolling waterfront property is what the homeowners fell in love with. Using a magnificent century old Blue Atlas Cedar as the focal point, Kevin Murphy of Kean Landscapes crafted a specimen laced, mature landscape. A superb pool, multi-level terraces,

staged gardens and ample, open lawn are the ornate tapestry on which the home sits.

Talent, creativity, craftsmanship and experience combine to make Kean Development Company a premier luxury homebuilder. Kean's enduring pride, vision and purpose make dreams a reality. ■